



French Balayage Milky

Tech guide.



L'ORÉAL
PROFESSIONNEL
PARIS

#Milktea color trend is taking over social.

Inspired by the rich hues when you shake up milk in your tea.



46.7M views



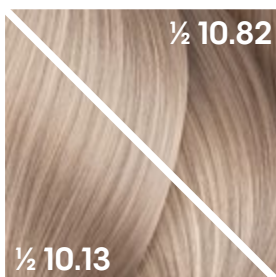
+10K posts

A soft, lived in root plus open air babylight throughout with curated Dia light #milktea recipes for a creamy finish.

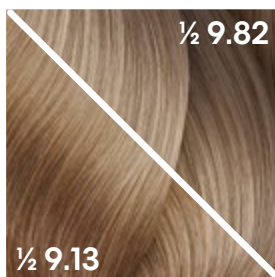
Perfect for all hair types & bases.

What's your #milktea recipe?

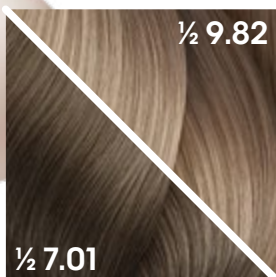
Milky Toffee



Milky Brown Sugar



Milky Cocoa



Milky Chocolate



Get the #milktea look, effortlessly.

NEW Milky Technique.



Step 1.

Lighten with Blond Studio.

Thin slices to create weaved & cushioned babylights with open air painting.



Step 2.

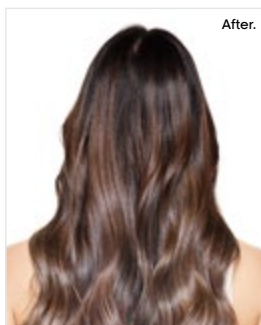
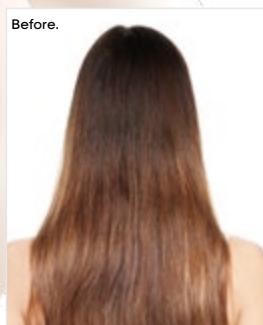
Gloss with Dia light.

Milky finish through curated Dia light recipes.

PRO TIP

Apply Metal Detox Pre-treatment for long lasting color results.

Discover your endless color technique possibilities inspired by #milktea.

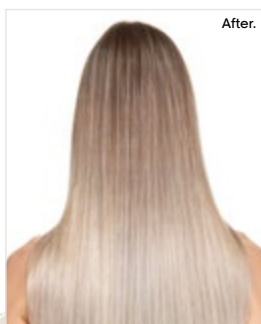
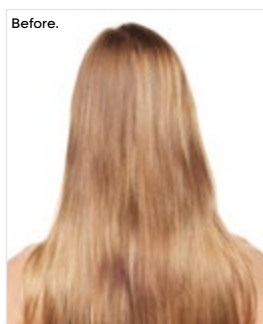


Regrowth:

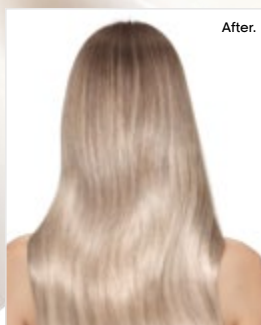
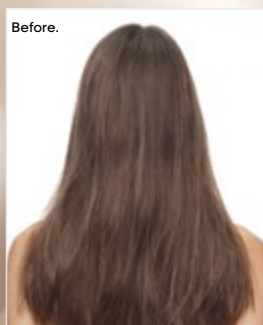
Dia light
 $\frac{1}{2}$ 8.18 + $\frac{1}{2}$ 7.8

Lengths & Ends:

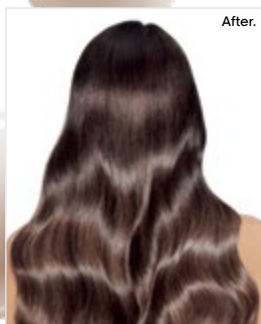
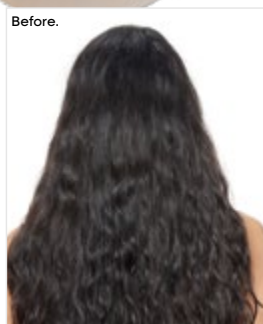
Dia light
 $\frac{3}{4}$ 10.23 + $\frac{1}{4}$ 10.32



Dia light
 $\frac{1}{2}$ clear +
 $\frac{1}{4}$ 10.13 + $\frac{1}{4}$ 10.82.



Dia light
 $\frac{1}{2}$ clear + $\frac{1}{4}$ 10.82
+ $\frac{1}{4}$ 10.13



Regrowth:

Dia light
 $\frac{1}{2}$ 7.8 + $\frac{1}{2}$ 8.18

Lengths & Ends:

Dia light
 $\frac{3}{4}$ 9.13 + $\frac{1}{4}$ 7.8

Curated #milktea recipes by our pros.



Milky Toffee

@minkimcolorist

[Balayage] Blond Studio 9 Bonder Inside

[Tone] Dia light Clear + 10.23



Milky Chai

@jeremiahcookpro

[Balayage] Blond Studio 9 Bonder Inside

[Tone] Dia light 10.18 + 10.32 + 9 + 8.18 6-vol

Curated #milktea recipes by our pros.



Milky Ginger

@adina_pignatare

[Balayage] Blond Studio

[Tone] Dia light 9.82 + 7.13



Milky Pearl

@jess.stylist

[Balayage] Blond Studio 9 BS

[Root] Dia light 7 + 7.13

[Tone] Dia light 10.13 + 10.23

Get milky creamy hues with our Blond Studio lighteners + Dia light.

Lightening tool kit.



Blond Studio 9 Bonder inside

With bonder inside for accelerated lift with care.

Blond Studio 9 Oil Developer.



Blond Studio 9

Lightening powder to lift dark bases.

Blond Studio 9 Oil Developer.



Blond Studio Clay 7

Ammonia-free clay for precise painting

Majicrème Developer.

Get milky creamy hues with our Blond Studio lighteners + Dia light.

The toner pros know and love.



Controlled application.
Gel-crème consistency for precision application.



Flexible processing time.
(2-20 minutes).



+30% more conditioning*.
Conditions hair after lightening and color services.

*vs. uncolored hair.

Blues & Greens

.11/BB

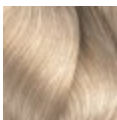
.1/B

.01/NB

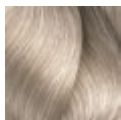
.07/NGr

.18/BM

10

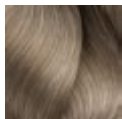


10.01/10NB
Soft Frosty
Milkshake

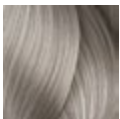


10.18/10BM
Dazzling
Pearl Milkshake

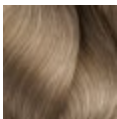
9



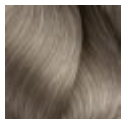
9.11/9BB
Iceberg Milkshake



9.1/9B
Icy
Milkshake

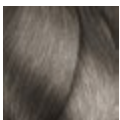


9.01/9NB
Frosty
Milkshake

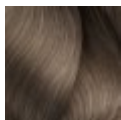


9.18/9BM
Icy Pearl Milkshake

8

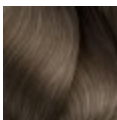


8.1/8B
Iced Latte



8.18/8BM
Cool Pearl
Milkshake

7

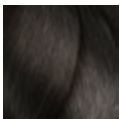


7.01/7NB
Natural Frost

6

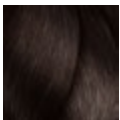


6.11/6BB
Charcoal



6.1/6B
Cool Almond

5



5.1/5B
Cool Smoked
Walnut



5.07/5NGr
Sage

4

Dia light

L'ORÉAL
PROFESSIONNEL
PARIS

Violets

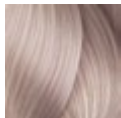
.21/VB

.22/VV

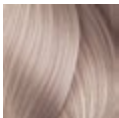
.2/V

.02/NV

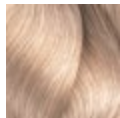
10



10.21/10VB
Pearl Sorbet
Milkshake

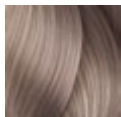


10.22/10VV
Iridescent Berry
Milkshake

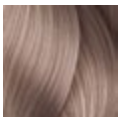


10.02/10NV
Soft Pearly
Milkshake

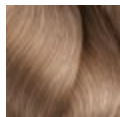
9



9.21/9VB
Sorbet
Milkshake

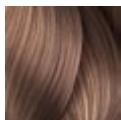


9.2/9V
Iridescent
Milkshake



9.02/9NV
Pearly
Milkshake

8



8.21/8VB
Icy Sorbet

7


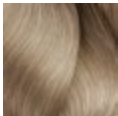
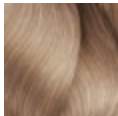
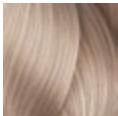
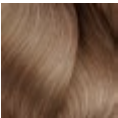
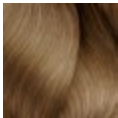
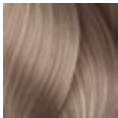
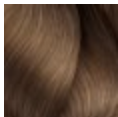
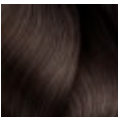
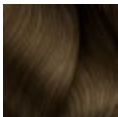
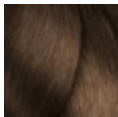
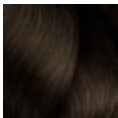
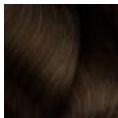
6

5

4

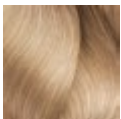
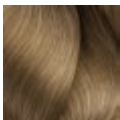
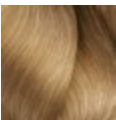
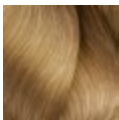
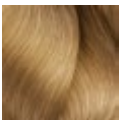
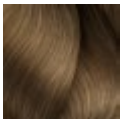
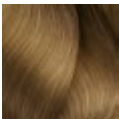
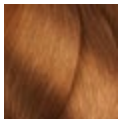
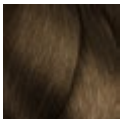
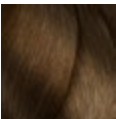
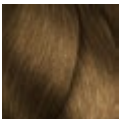
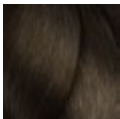
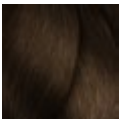
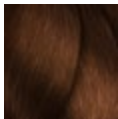



Dia light

L'ORÉAL
PROFESSIONNEL
PARIS

Cool Browns & Blondes			Mochas		
	.12/BV	.13/BG	.23/VG	.82/MV	.8/M
10	 10.12/10BV Frosty Pearl Milkshake	 10.13/10BG Vanilla Macaroon Milkshake	 10.23/10VG Pearly Gold Milkshake	 10.82/10MV Pearly Glow Milkshake	
9	 9.12/9BV Pearl Milkshake	 9.13/9BG Cool Buttercream		 9.82/9MV Iridescent Beige Milkshake	
8			 8.23/8VG Lavender Honey		
7	 7.12/7BV Cool Beige	 7.13/7BG Satin Blonde			 7.8/7M Mocha Latte
6		 6.13/6BG Walnut	 6.23/6VG Hazelnut Honey		
5					
4					

Dia light

L'ORÉAL
PROFESSIONNEL
PARIS

	Naturals	Warm Browns & Blondes		Golds		
		.31/GB	.32/GV	.03/NG	.3/G	.34/GC
10			 <p>10.32/10GV Sandy Milkshake</p>			
9	 <p>9/9N Very Light Blonde</p>	 <p>9.31/9GB Vanilla</p>		 <p>9.03/9NG Honey Milkshake</p>	 <p>9.3/9G Light Gold</p>	
8	 <p>8/8N Light Blonde</p>				 <p>8.3/8G Light Brown Sugar</p>	 <p>8.34/8GC Light Caramel</p>
7	 <p>7/7N Blonde</p>	 <p>7.31/7GB Almond</p>		 <p>7.3/7G Brown Sugar</p>		
6	 <p>6/6N Dark Blonde</p>				 <p>6.3/6G Gingerbread</p>	 <p>6.34/6GC Honey Chestnut</p>
5	 <p>5/5N Light Brown</p>	 <p>5.31/5GB Praline</p>				
4	 <p>4/4N Brown</p>					

Dia light

L'ORÉAL
PROFESSIONNEL
PARIS

Coppers

Reds

.43/CG

.40/CCC

.45/CRv

.46/CR

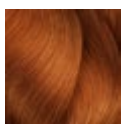
.64/RC

.66/RR

10

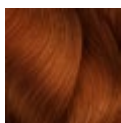
9

8

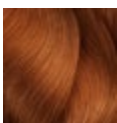


8.43/8CG
Copper Sunset

7

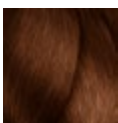


7.43/7CG
Sunset
Rubilane™



7.40/7CCC
Firelight

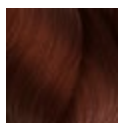
6



6.45/6CRv
Cinnamon

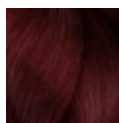


6.46/6CR
Autumn
DM5/
Rubilane™



6.64/6RC
Garnet
DM5/
Rubilane™

5



5.66/5RR
Ruby
DM5/
Rubilane™

4



Clear

Color theory.

Dual coding system

LEVEL	tone
10 pale blonde	N natural
9 very light blonde	B blue .1
8 light blonde	V violet .2
7 blonde	G gold .3
6 dark blonde	C copper .4
5 light brown	Rv red-violet .5
4 brown	R red .6
3 dark brown	Gr green .7
2 darkest brown	M mocha .8
1 black	

[Example]

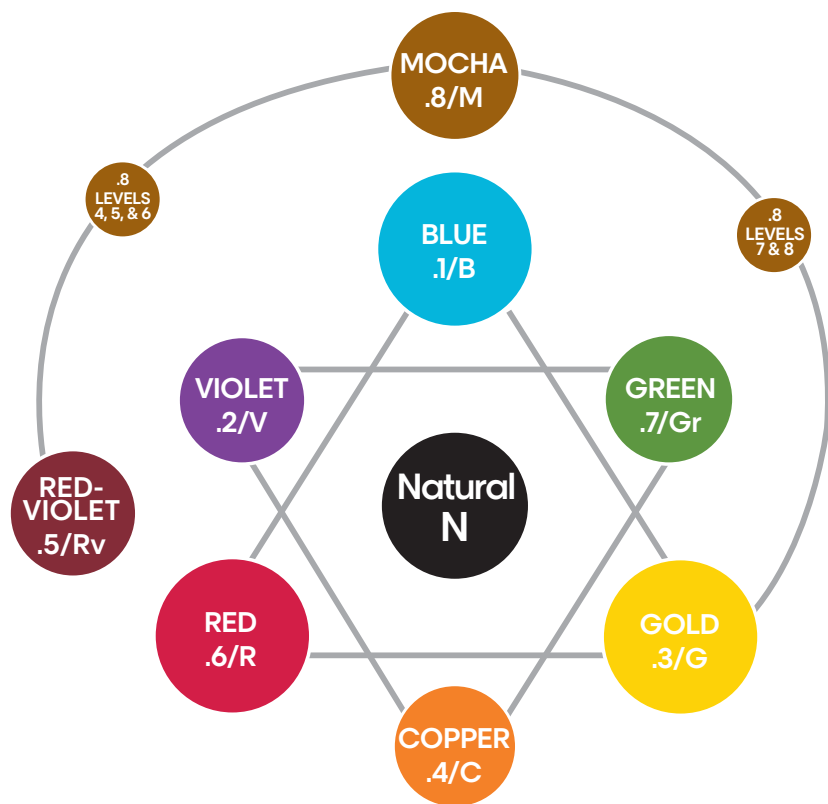
5GV
5.32

Level of color ————
Primary tone of color ————
Secondary tone of color ————

Color theory.

Law of color

- Opposite colors on the color wheel will counteract or neutralize each other.
- Opposite colors on the color wheel are also complementary.



Mixing guidelines.

Preparation

1:1.5 mixing ratio

1 tube (1.7 oz.) to 2.6 oz. Diactivateur developer

- Measure 2.6 oz. of 6-vol. (1.8%) or 9-vol. (2.7%) Diactivateur Developer, depending on the desired intensity of the result.

Application

On dry hair, spray Metal Detox Pre-Treatment on each section and apply Dia Light formula with a brush or a bottle on regrowth, mid-lengths or ends.

On wet hair, after shampooing with Metal Detox Shampoo apply Dia light formula with a brush or bottle on pre-lightened hair.

Flexible processing time: 2 to 20 minutes

Liquifier

[Best for]

- Fast, bottle application
- Toning all over

[How to use]

Step 1: Mix your Dia light shade + Diactivateur developer at 1:1.5 Ratio.

Step 2: Add Dia light Liquifier to formula and mix.

For half dose, add .2 oz. of liquifier.

For full dose, add .4 oz. of liquifier.

*Liquifier only to be used with Dia Light
+ Diactivateur developer. Liquifier is not a developer.

Rinsing

When development time is complete, add a little warm water to the hair and gently emulsify.

Thoroughly rinse color from the hair and shampoo with Metal Detox Shampoo to pro guarantee your color result. Follow with Metal Detox mask.



L'ORÉAL

PROFESSIONNEL

PARIS

 [lorealprofessionnel.us](https://www.lorealprofessionnel.us) |  [lorealpro_education_us](https://www.instagram.com/lorealpro_education_us)
 [lorealprou](https://www.youtube.com/lorealprou) | [us.lorealprofessionnel.com](https://www.us.lorealprofessionnel.com)

for more information contact L'Oréal Professionnel's
hotline at 1.800.345.5012

LPJUNFB01